

We Stand Together

Composd by Rosie Bergonzi

Arranged M Elvin/B Pope

♩ = 120

10

10

Musical notation for Example 6-9, measure 10. The staff contains a series of eighth notes with accents, followed by a quarter rest.

14

14 $\boxed{A}^{poco} f$



4

18

18

2 4

This musical notation is for measures 18 through 22 of the song 'The Rose Tree'. It is written in bass clef with a key signature of one sharp (F#). Measure 18 contains a whole rest. Measure 19 begins with a quarter rest, followed by a quarter note G2, an eighth note A2, and a beamed eighth-note pair of B2 and C3. Measure 20 consists of a beamed eighth-note pair of D3 and E3, followed by a beamed eighth-note pair of F3 and G3, and then a beamed eighth-note pair of A3 and B3. Measure 21 consists of a beamed eighth-note pair of C4 and D4, followed by a beamed eighth-note pair of E4 and F4, and then a beamed eighth-note pair of G4 and A4. Measure 22 contains a whole rest. The numbers '2' and '4' are placed above the first and fourth measures, respectively, indicating the number of measures in the corresponding vocal parts.


27

27

3 4 B

37

37




45

[illegible]

49

49 C



fall at the end of the note

54

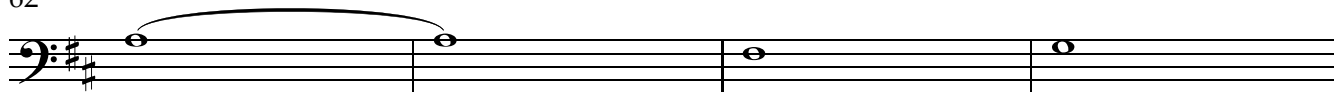
[illegible]

58

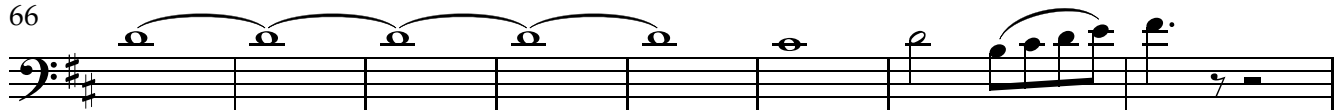
58 D 3



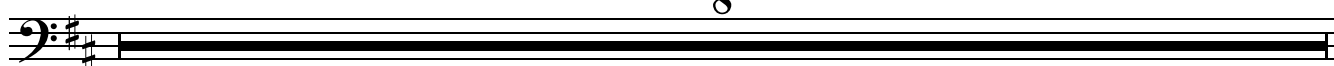
62



66



74



82



86



90

 $sfp \triangleleft$

95

 $sfp \triangleleft$

99

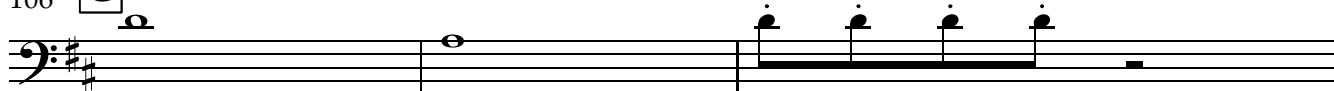
 $sfp \triangleleft$

104



100

100



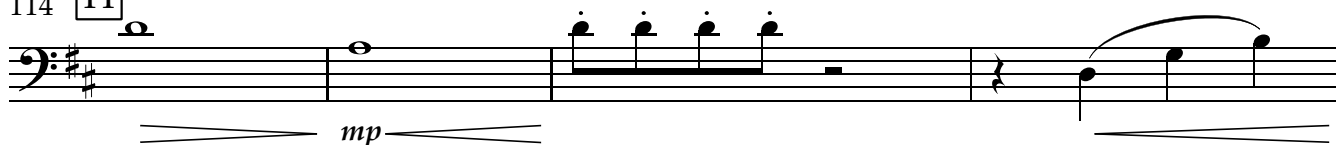
A diagram of a converging lens, represented by two lines that converge towards a central point. The label *mp* is placed to the right of the lens.

109

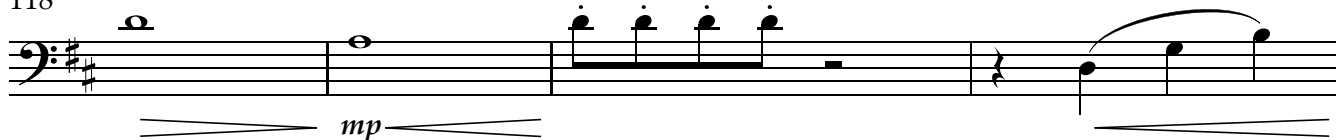


114

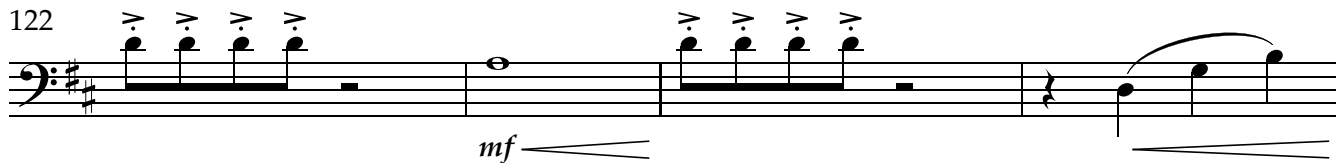
H



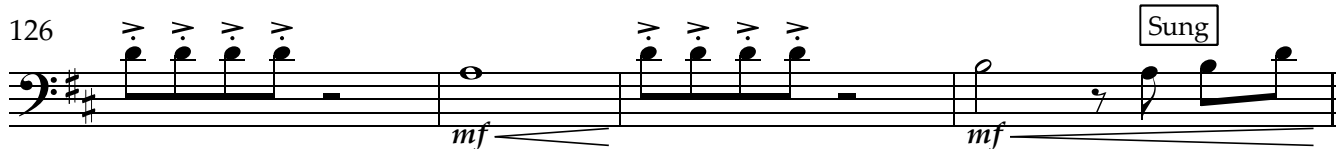
118



122



126



The Wo-men's

130

I



EU - RO

Has come to our town

The Wo-men's

132



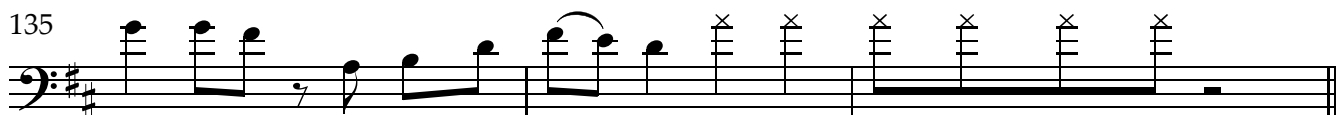
EU - RO

We ain't mess-ing a-round

The Wo-men's EU - RO

Sta-di -

135



ums - are full

The Wo-men's EU - RO

WELOVE WO-MEN'S FOOT-BALL